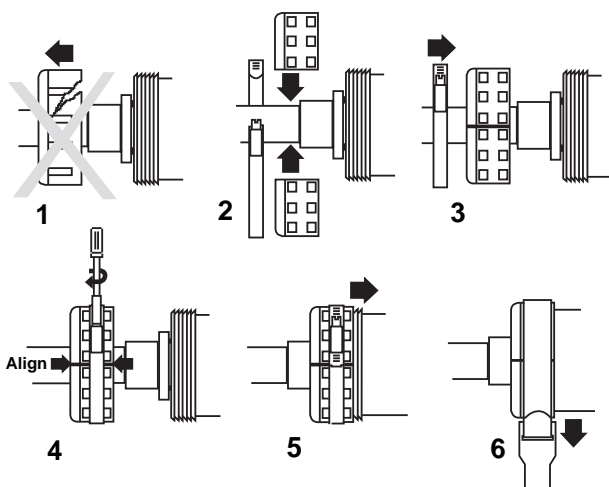




SPLIT NUT KIT FOR TRUE UNION 2000 VALVES & UNION 2000 SCHEDULE 80 UNIONS



SNK-3A-1200



Split Nut Kits are designed to replace broken union nuts on Spears® True Union 2000 Ball Valves and Union 2000 Schedule 80 Unions. Can also be used if nut was not in place during end connector installation. Kit includes SS316 Gear Clamp and 2-Split Nut halves. Install Split Nut Kit as illustrated. **Caution: System must be depressurized and drained prior to repairs.**

Step 1: Remove broken union nut. Cut from system if necessary.

Step 2: Open gear clamp and position clamp and nut halves around pipe. Be sure threads face toward valve.

Step 3: Slide gear clamp over nuts and center between ribs.

Step 4: Tighten gear clamp fully snug while maintaining flush alignment of nut halves. Do not over tighten.

Step 5: Thread union nuts onto valve or union body.

Step 6: Tighten with a strap wrench. Do not over tighten.



SPEARS® MANUFACTURING COMPANY
CORPORATE OFFICE
15853 Olden Street, Sylmar, CA 91342 PO Box 9203, Sylmar, CA 91392
(818) 364-1611 • www.spearsmfg.com

